

Das neue Kompakt-Spannzangenfutter

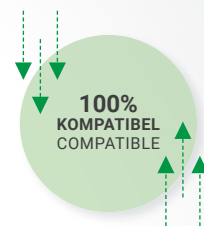
The new compact collet chuck

HSK63E/F • 462E • OZ25 • DIN6388



OZ25 Kompakt-Spannmutter, kugelgelagert

- Standard OZ-Spannprofil, D=50mm



Kompatibel mit der patentierten Zeta Woodline Spannmutter

- Abrutschsicheres Spannprofil
- Verschiedene Bedienelemente
- Korrosionsbeständig

Vorteile:

- Geringeres Gesamtgewicht
- Kompaktes Design
- Hohe Rundlaufgenauigkeit (0,001-0,004mm)
- Kugelgelagerte Spannmutter
- Drehmoment bis 150N/m

Technische Daten:

- Nach DIN69893-6 gefertigt
- Für alle 462E Spannzangen geeignet
- Gehärtet
- Feingewuchtet 24.000 U/min
- Auch mit Antikorrosionsbeschichtung erhältlich

Lieferumfang:

- Inklusive kugelgelagerter Spannmutter oder Zeta Sicherheitsspannmutter

Advantages:

- Lower weight
- Compact design
- Highest runout precision (0,001-0,004mm)
- Ballbearing collet nut
- Up to 110 lbf.ft torque

Technical data:

- Manufactured according to DIN69893-6
- Suitable for all 462E collets
- Hardened
- Balanced to 24.000rpm
- Available with anti-corrosion coating

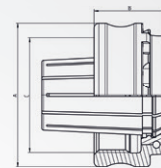
Scope of delivery:

- Ball bearing collet nut or Zeta safety clamping nut included

Weitere Informationen finden Sie in unserem Zeta-Katalog.
Further Information can be found in our Zeta-catalog.

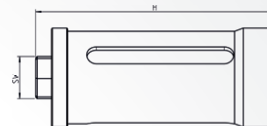
WOODLINE Spannmutter / WOODLINE collet nut

Typ Type	A	B	C	Artikelnummer Part number
OZ 25 Kompakt	Ø50	32	M42x2	SPAMUOZWC25Zeta



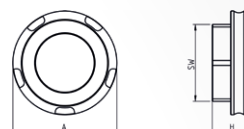
Drehmomentstecknuss / Torque nut

Typ Type	A	H	SW	V	Artikelnummer Part number
Stecknuss	Ø52	130	27	1/2"	STECW2532Zeta



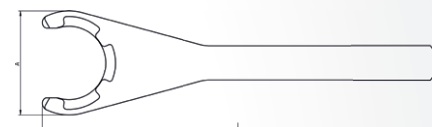
Eindrehhilfe / Screw-on-adapter

Typ Type	A	H	SW	Artikelnummer Part number
Eindrehhilfe	Ø52	25	36	SCHEDW2532Zeta



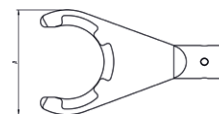
Standardspannschlüssel / Standard spanner

Typ Type	A	L	Artikelnummer Part number
Spannschlüssel	Ø65	245	SCHEW2532Zeta



Drehmomentadapter / Torque wrench adapter

Typ Type	A	Artikelnummer Part number
Drehmoment-adapter	Ø65	THW2532



Alle Kompakt-Spannzangenfutter

All compact collet chucks

Kegel Taper Size	Nenngröße nominal size	Spannbereich clamping range	L	Artikelnummer Part number
HSK63F	OZ25	2-25mm	76mm	SPZHSK63F07625OZRK
HSK63F	OZ25	2-25mm	115mm	SPZHSK63F11525OZRK
HSK63F	OZ25	2-25mm	150mm	SPZHSK63F15025OZRK
HSK63F	OZ25	2-25mm	175mm	SPZHSK63F17525OZRK
HSK63F	OZ25	2-25mm	200mm	SPZHSK63F20025OZRK
HSK63F	OZ25	2-25mm	225mm	SPZHSK63F22525OZRK
HSK63E	OZ25	2-25mm	76mm	SPZHSK63E07625OZRK
HSK63E	OZ25	2-25mm	115mm	SPZHSK63E11525OZRK
HSK63E	OZ25	2-25mm	150mm	SPZHSK63E15025OZRK
HSK63E	OZ25	2-25mm	175mm	SPZHSK63E17525OZRK
HSK63E	OZ25	2-25mm	200mm	SPZHSK63E20025OZRK
HSK63E	OZ25	2-25mm	225mm	SPZHSK63E22525OZRK

